

EnviroHub

Water Treatment

Effective monitoring, treatment and reporting of water quality



ATLANTIC
PUMPS



Core Benefits

- ✓ Easy to use
- ✓ Ensures compliance & environmental regulations
- ✓ Flexible modular system
- ✓ Supports sustainability

What is EnviroHub?

EnviroHub is a water management control system used by the quarrying and construction industries.

EnviroHub monitors, treats, and reports on water quality onsite, from when it first comes on to site until it is disposed of.

In addition to monitoring and reporting water quality onsite, EnviroHub can inform the site if the water is unsafe to be disposed of and can automatically intervene. Furthermore, EnviroHub ensures that any water the site is to dispose of, is treated and is free from pollutants.

EnviroHub is an Atlantic Pumps brand and is used both here in the UK and overseas.

How Can EnviroHub Be Used?

EnviroHub monitors all types of water usage and disposal onsite including, but not limited to:

- ✓ Site dewatering applications – the removal of excess water from quarries and construction sites.
- ✓ Lagoon, pond or excavation dewatering.
- ✓ Monitoring concrete washout water and neutralising the potential of hydrogen (pH).
- ✓ The monitoring of flow and solids used in a wash plant.
- ✓ Process plant effluent treatment.
- ✓ Sludge thickening and solidifying.

Why Is EnviroHub Important?

A site may accumulate water from the ground when digging, use water in the production process or to wash down equipment after use. As a result, there can be contaminants such as chemicals in the water which can cause problems on site and be harmful to the environment.

Sites are now required to provide proof of safe water disposal. With the Environment Agency routinely conducting water quality checks, a robust water monitoring system such as EnviroHub can play a vital role to mitigate risk.

Disposing of water that contains pollutants can result in heavy fines and can damage a company's reputation. Furthermore, incorrect disposal of water has resulted in solids or concrete silt blocking drains, chemicals killing off local wildlife and trees and costly environmental clean-ups needing to be undertaken.

What Can EnviroHub Report?

- ✓ A complete record of data readings for each aspect being monitored.
- ✓ Alert, email and action! Warnings will be sent to you when you are within 10% of your permitted limit on any aspect. This enables you to take the required action before it causes an issue. You will also be informed of a final action, such as turning pumps off or on, or closing valves has been implemented and that you are now safeguarded against becoming in breach of your consent.
- ✓ EnviroHub gives you total peace of mind that whether you are on site or not, you are not at risk of being in breach of your environmental permits.
- ✓ The data will give you an automatic log for the authorities proving you have been compliant.



EnviroHub units are designed to be combined to work alongside one another



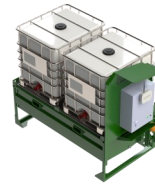
Lamella Tanks (HL)

Used to remove suspended solids from a process fluid. It discharges cleaned water which can be sent off-site or recycled and a settled solids sludge.



Treatment Tanks (TT)

Typically used alongside treatment units to dose process water before solids removal can be undertaken using a Lamella Tank.



Dosing Units (TU)

Typically used alongside Treatment Tanks to treat process water before solids removal is undertaken.



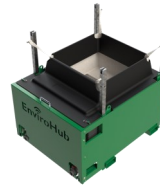
Correction Tanks (CT)

Used mainly alongside concrete washout units to lower the pH level of concrete wash-out water and wedge pit water.



Control Module (CM02)

The EnviroHub 'brain', is an affordable, cutting edge industrial programmable logic controller with specialised capabilities for use with EnviroHub systems. Quick and easy to set up, it can be configured for a large array of water monitoring and control purposes and is capable of returning quality data to the Senteos portal, for graphical display.



Concrete Washouts (CW)

Used to separate aggregate and silt from concrete wash water before additional treatment is undertaken by a Correction Tank.



Monitoring Units (MU)

Sited in the pipeline as it leaves your site, the MU monitors the water quality as it passes that particular point. The data is then interpreted by the Control Module.

